

AgileAssets' Performance Models

Jim Edgerton

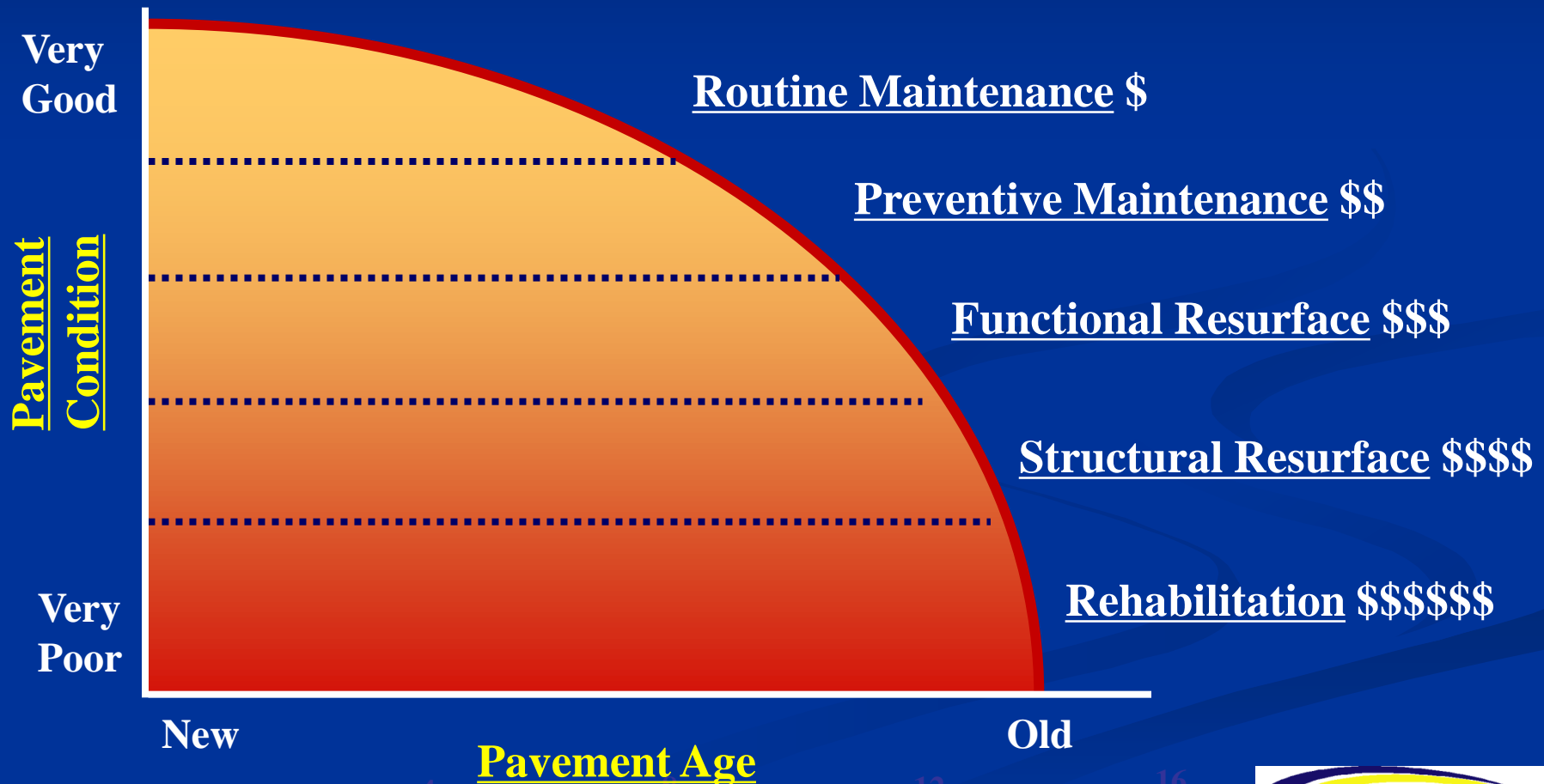
Director of Technical Sales

November 10, 2011

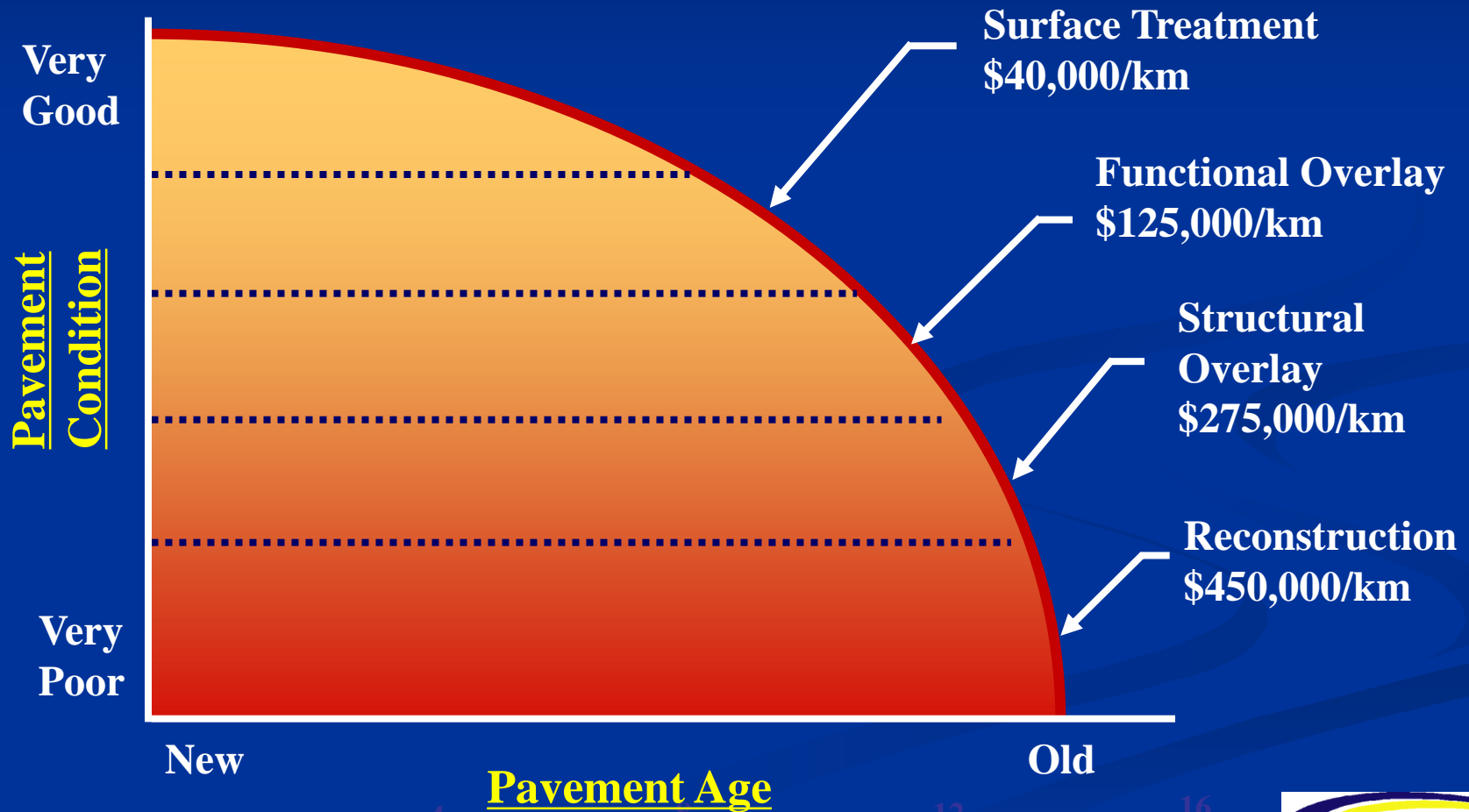


Pavement Preservation
The Importance of Timing

Cost of Delaying Maintenance



Cost of Delaying Maintenance



AgileAssets Pavement Manager

- Very Flexible – Simple or Complex
- Highly Configurable
 - System configured to the way you do business
- Multi-Constraint Optimization
- Robust Reporting Tools
- Integrated with other Assets



“Unlimited” Analysis

- Unlimited Decision Trees
- Unlimited Pavement Types
 - Thick Pavements vs. Thin Pavements
 - High Traffic vs. Low Traffic
 - GABC Base vs. Recycled Base vs. Reclaimed Base
 - Hot Mix w/ Micro-Surfacing vs. No Micro-surfacing
 - Allow for Different Treatments by Classification, Curb/No Curb, etc.
- Unlimited Performance Models



“Unlimited” Analysis

- Unlimited Decision Trees

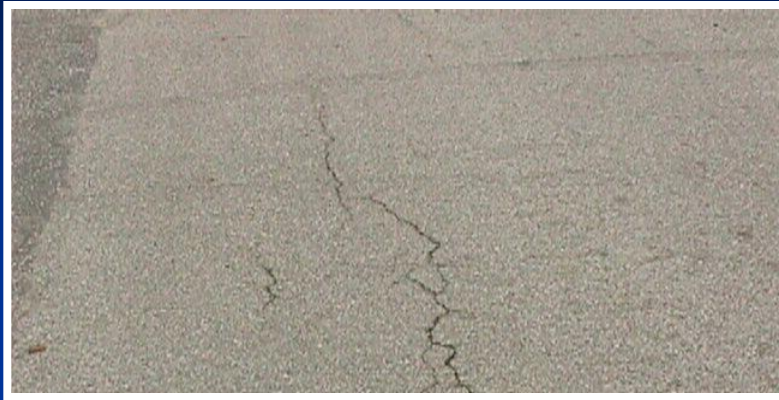
**Analysis Capabilities
are Data-dependent**

**Available Data will limit what can be
analyzed**

- Unique Performance Models



Condition vs. Strategy



Routine - Crack Seal (?)



Routine - Patching



Resurface



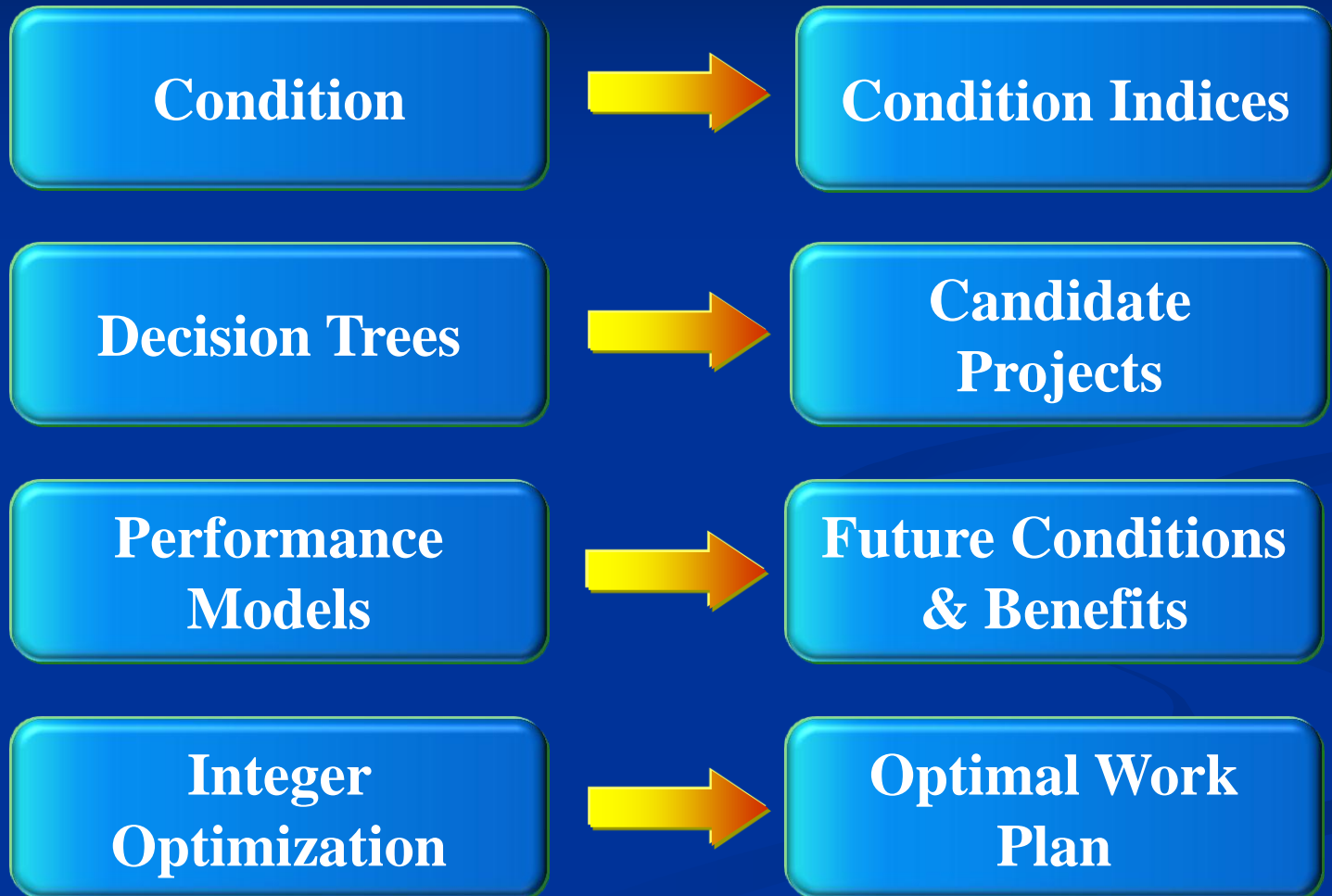
Reconstruction

Multi-Constraint Analysis

Multiple Year Analysis utilizing:

- Decision Trees
- Performance Models
- Optimization Analysis (Solver)

Network Optimization Approach



Performance Models

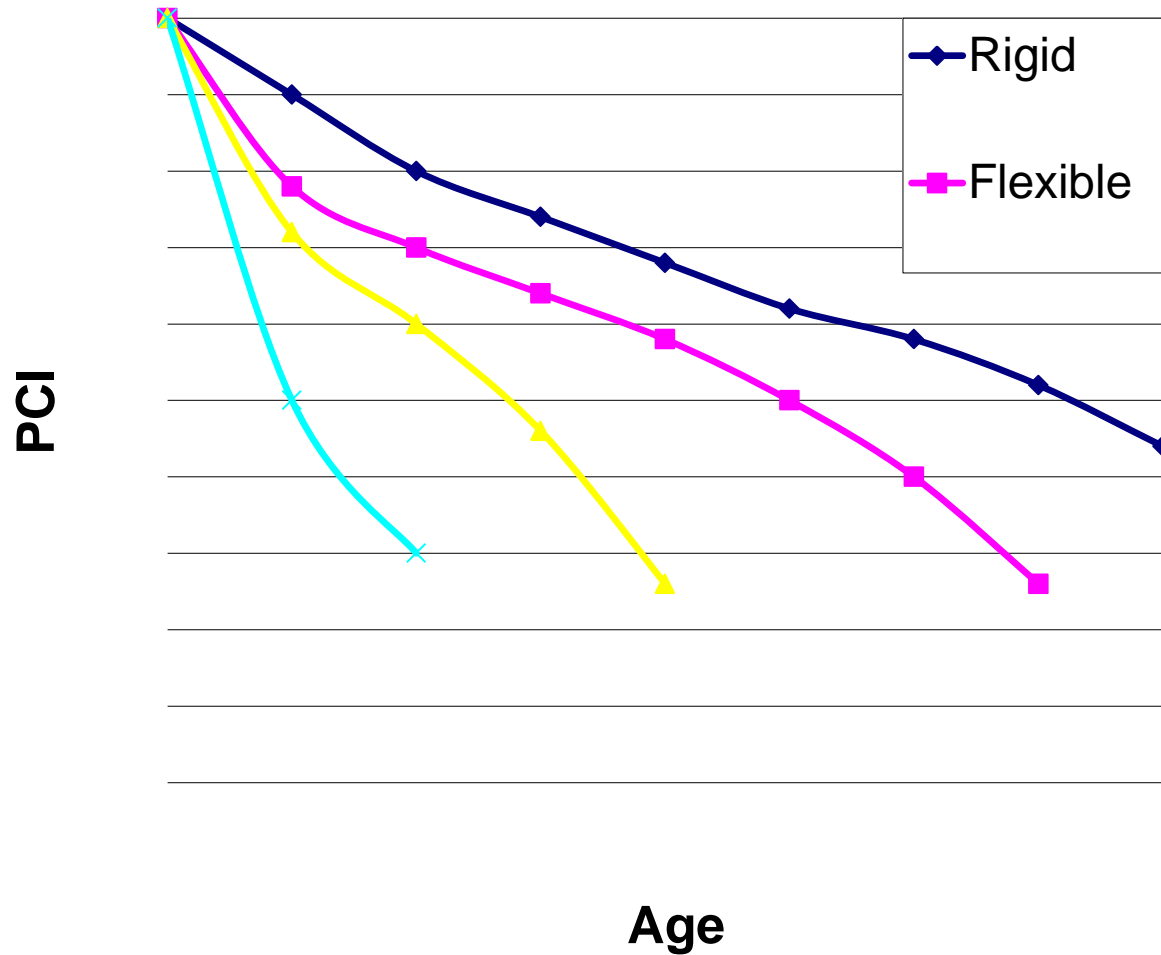
- Used to Predict Future Performance
 - Long-term Consequence Analysis
- Used to Determine “Benefit” of a Treatment
 - Area Under The Curve
 - Modify w/ Available Factors
 - ADT, ESAL’s, Classifications, Enviro-Friendly Factors, etc.
- Complexity of Models
 - Level of Available Detail
 - Single Condition Index vs. Multiple Indices



Performance Modeling

- Deterministic Models
 - Expert opinion
 - Statistical Analysis
- Markov Chain (Transition Probability Matrix)
 - Although available, it is typically not used
- Dynamic Modeling
 - Models will adjust to latest condition data

Example – State DOT w/ 4 Curves



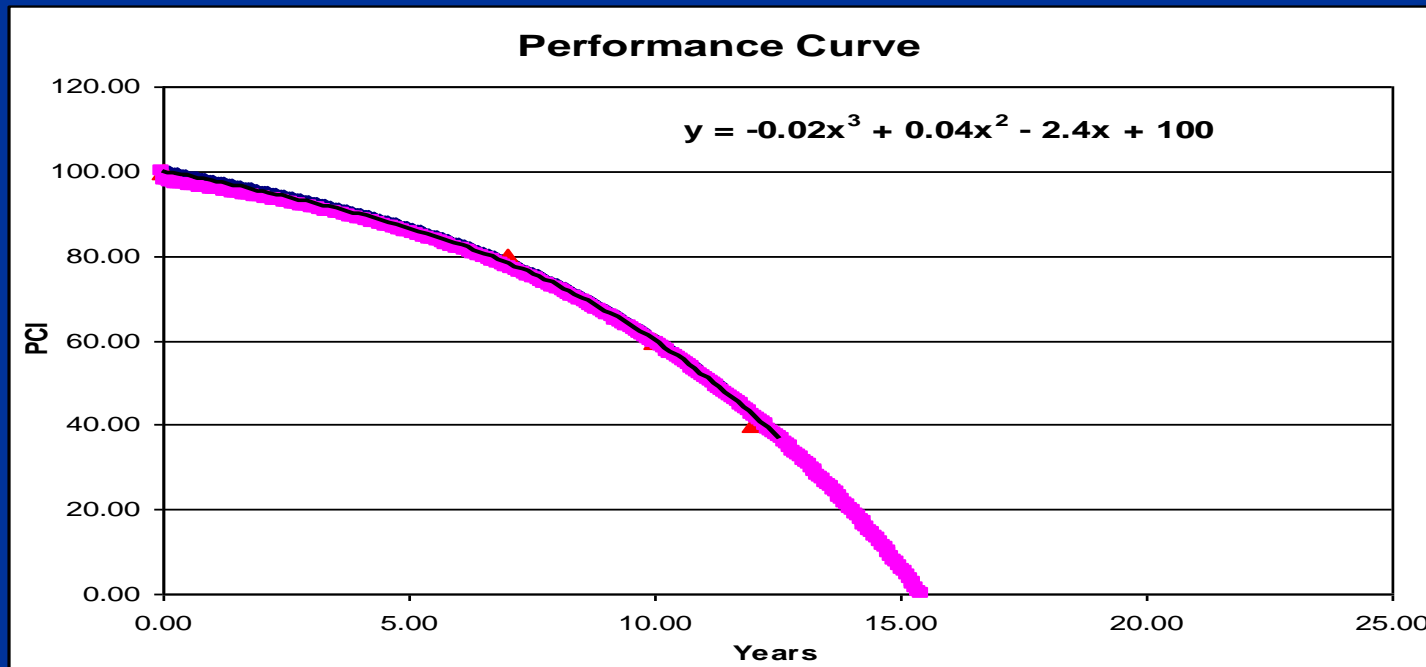
Performance Models

■ Equation Builders

■ Internal

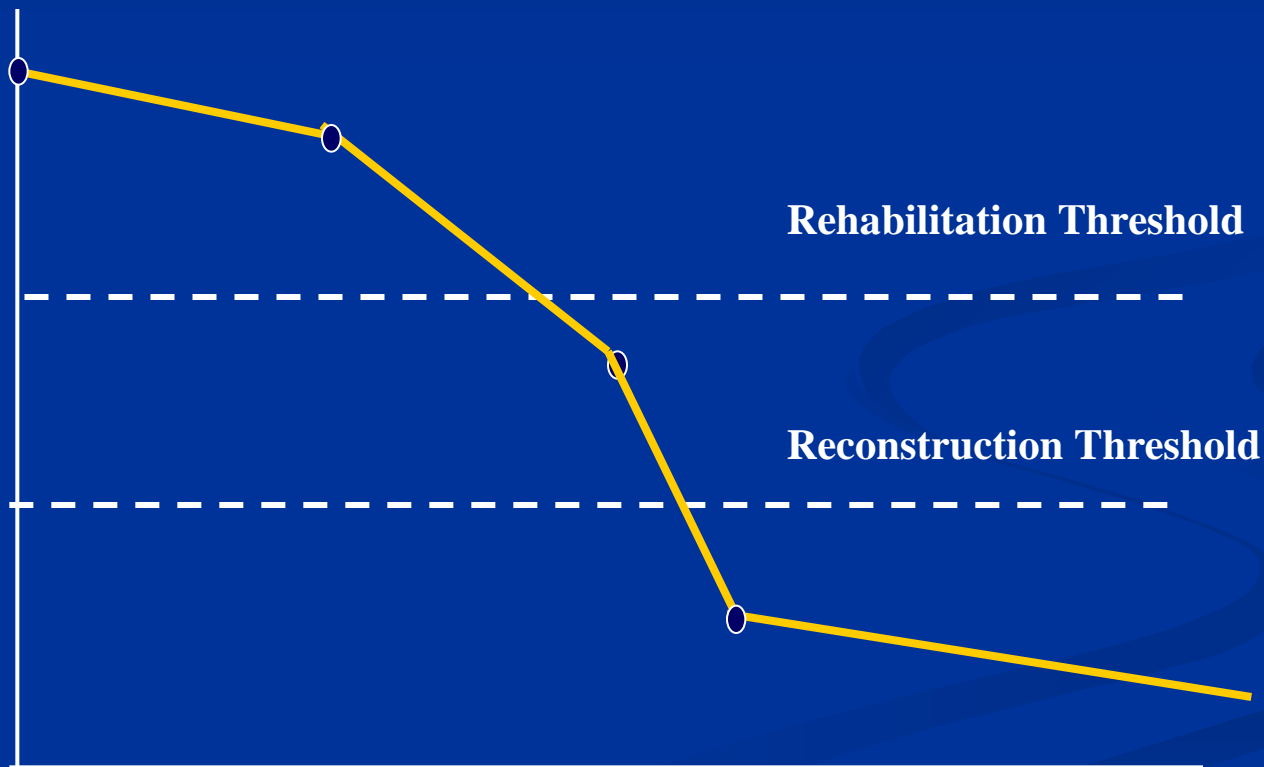
■ Pavement Management Software

■ External



Performance Models

- Example: Enter up to 10 Points
 - User-specified Points (PCI vs. AGE)



Decision/Performance Models

- Understand “Reality”
- Fully consider all factors
 - Accurate Ages
 - Pavement Structure
 - Composite Index or an Individual Index
 - If Composite includes IRI
 - Micro or Slurry on a road will affect IRI Index
- Don't Let Perfect get in the Way of Pretty Good
 - Do you meet your objectives?

Additional Flexibility

- Reset Values (After a Treatment is Applied)
 - Fixed Value
 - Recon: $PCI_{New} = 100$
 - Increase by “X”
 - Surface Coat: $PCI_{New} = PCI_{Old} + 15$
 - Equation
 - Overlay: $PCI_{New} = PCI_{Old} + 50(PCI_{Old} / 100)^{0.85}$
- Curve Families
 - Change Curve after treatment

Summary

Questions?

Jim Edgerton

jedgerton@agileassets.com

(919) 573-5219

